

- *Highly-developed design*
- *Superior smoothness for a natural gait*
- *Customizable function for optimal control*
- *Durable weight limit , up to 352 lbs*
- *Worry-free warranty, up to three years*



The College Park TruStep® Foot combines virtually the same vertical motion, rotation and stability as in the anatomical foot. With a full range of options available, TruStep's versatile design allows complete customization, resulting in a natural gait pattern and unsurpassed comfort.



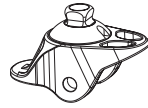
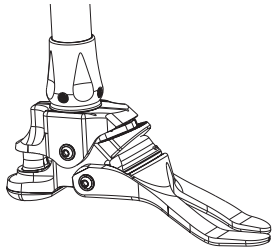
TruStep, Experience Everyday Comfort.



RSLSTEEPER
Products Division
Unit 7, Hunslet Trading Estate
Severn Road, Leeds LS10 1BL
Tel: +44(0) 870 240 4133
Fax: +44(0) 870 240 4779
Email: sales@rslsteeper.co.uk
Web: www.rslsteeper.com

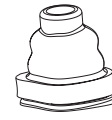
TruStep Order Information

Endo IH - NTS ■ ● IH▲ Integrated Pyramid Heavy Duty (IH) - Max 136 kg (300 lbs) - For moderate to high activity levels



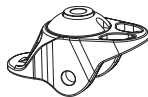
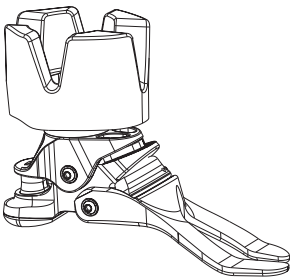
Endo IH Ankle	Size
NTS IHA 2224	22-24
NTS IHA 2531	25-31

Compatible with 30mm Endo Systems



Sealing Boot	Size
NTS SB ■ ● 2224	22-24
NTS SB ■ ● 2526	25-26
NTS SB ■ ● 2730	27-30

Exo ALX™ - NTS ■ ● ALX▲ Alignable Exo (ALX) - Max 160 kg (352 lbs) - Optional Exo Block for moderate to high activity levels



Exo ALX Ankle	Size
NTS ALXA 2224	22-24
NTS ALXA 2531	25-31



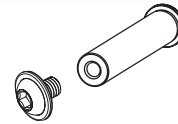
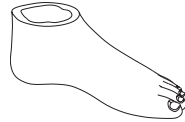
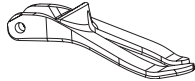
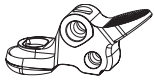
ALX Kit	Size
NTS XBK ■ 2224	22-24
NTS XBK ■ 2526	25-26
NTS XBK ■ 2730	27-30

Includes Exo Block, Lamination Gasket and Mounting Bolt



Pyramid Tool Kit	Size
NTS EXPK ■ 30	22-31

TruStep Components

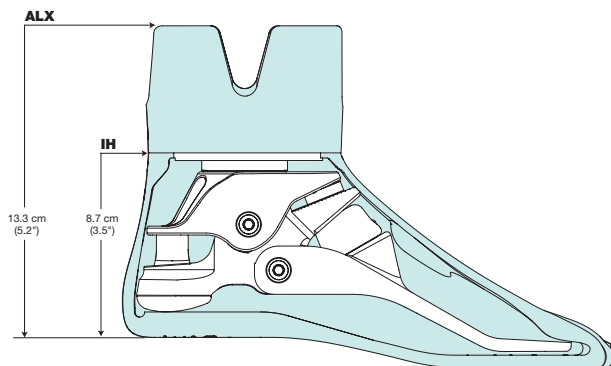


Heel	Size	Forefoot	Size	Foot Shell	Size	Spectra Sock	Size	Axial Pin	Size	Lower Bushing	Size
NTS H 2224	22-24	NTS FM ▲■	22-26	NTS S ■●▲	22-31	NTS SS 2231	22-31	NCP AP L		NTS LB	22-31
NTS H 2526	25-26	NTS FL ▲■	27-31	NTS S ■●▲ W	24-26			Axial Pin Screw			
NTS H 2731	27-31			W = Wide				NCP APS	22-31		

(TruStep includes Shell, Sock and Sealing Boot)

- = "L" or "R" for Left or Right
- = "C" or "N" for Caucasian or Negroid
- ▲ = Foot size in cm (22-31)

TruStep Specifications



TruStep Gait Matching Guidelines

Weight		Front Bumper	Rear Bumper	Midstance Pad	Ankle Bushing
kg	lbs				
136-160	300-352	8	3X	F	F
104-135	230-299	8	2X	F	F
100-103	220-229	7	2X	F	M
86-99	190-219	7	1X	M	M
68-85	150-189	6	H	M	M
59-67	130-149	5	M	M	M
50-58	110-129	4	S	M	S
42-49	90-109	3	S	M	S
<41	<89	2	XS	M	S

