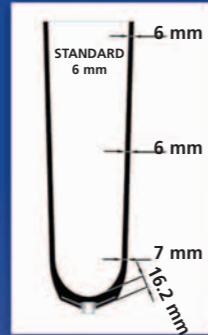
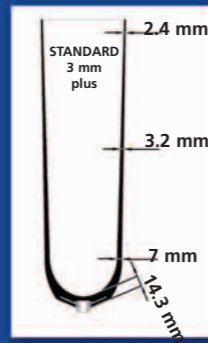


## Selection Chart for Trans-Tibial Liner

### medipro® RELAX Liner 3mm

Size	Part No. 5cm Matrix	Part Number 10cm Matrix
18 cm	NM.892.318	NM.892.118
20 cm	NM.892.320	NM.892.120
22 cm	NM.892.322	NM.892.122
23.5 cm	NM.892.323	NM.892.123
25 cm	NM.892.325	NM.892.125
26.5 cm	NM.892.326	NM.892.126
28 cm	NM.892.328	NM.892.128
30 cm	NM.892.330	NM.892.130
32 cm	NM.892.332	NM.892.132
34 cm	NM.892.334	NM.892.134
36 cm	NM.892.336	NM.892.136
38 cm	NM.892.338	NM.892.138
40 cm	NM.892.340	NM.892.140
45 cm	NM.892.345	NM.892.145



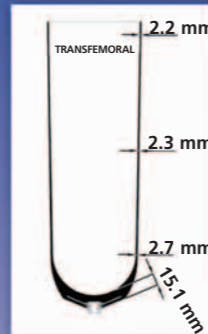
### medipro® RELAX Liner 6mm

Size	Part No. 5cm Matrix	Part Number 10cm Matrix
18 cm	NM.892.418	NM.892.218
20 cm	NM.892.420	NM.892.220
22 cm	NM.892.422	NM.892.222
23.5 cm	NM.892.423	NM.892.223
25 cm	NM.892.425	NM.892.225
26.5 cm	NM.892.426	NM.892.226
28 cm	NM.892.428	NM.892.228
30 cm	NM.892.430	NM.892.230
32 cm	NM.892.432	NM.892.232
34 cm	NM.892.434	NM.892.234
36 cm	NM.892.436	NM.892.236
38 cm	NM.892.438	NM.892.238
40 cm	NM.892.440	NM.892.240
45 cm	NM.892.445	NM.892.245

## Selection Chart for Trans-Femoral Liner

### medipro® RELAX Liner TF

Size	Part Number Matrix continuous
27 cm	NM.895.227
31 cm	NM.895.231
35 cm	NM.895.235
39 cm	NM.895.239
43 cm	NM.895.243
47 cm	NM.895.247
52 cm	NM.895.252



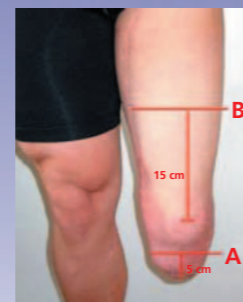
TEST WITHOUT RISK  
**"MONEY BACK GUARANTEE"**  
FOR RELAX NIGHT CARE SOCK

To help assess if the RELAX Umbrellan system will reduce/eradicate your patients phantom limb pain, we are offering a risk free "Money Back Guarantee" for the medipro® RELAX Night Care Sock. If after 5 days your patient feels no benefit from the product you can return it to us for a full refund.

If your patient feels a reduction in pain from the sock, they will receive the same benefit from the liner. Likewise if no benefit is felt from the sock, a reduction in pain would not be expected from the liner.

## Selection Chart for BK medipro® RELAX Night Care Sock supply:

circumferenc A (4cm above end of residual limb)	circumference B (15cm above middle of kneecap)	size	length incl. topband	Part Number.
18 - 23 cm	20 - 26 cm	S	40 cm	N1.880.322
23 - 30 cm	26 - 33 cm	M	40 cm	N1.880.323
30 - 39 cm	33 - 43 cm	L	40 cm	N1.880.324
39 - 47 cm	43 - 47 cm	XL	30 cm	N1.880.325
47 - 54 cm	47 - 54 cm	XXL	30 cm	N1.880.326



## Selection Chart for AK medipro® RELAX Night Care Sock supply:

circumference C (groin)	size	length incl. topband	Part Number
26 - 33 cm	M	40 cm	N1.880.323
33 - 43 cm	L	40 cm	N1.880.324
43 - 47 cm	XL	30 cm	N1.880.325
47 - 54 cm	XXL	30 cm	N1.880.326



# The medipro® RELAX Range



# effective relief in the treatment of phantom limb pain

## RELAX

A significant number of amputees suffer from phantom limb pain, which can interfere considerably with daily activities. Most of the time this is described as a sudden, sharp pain in the limb that is no longer present. Orthodox medicine often prefers to treat the pain with pain killers (opiates), which can have considerable side effects - at the same time, this approach cannot guarantee a long-term or permanent remedy for the majority of cases. There are alternative approaches to treatment, for example acupuncture or magnetic field therapy, however these also, do not necessarily provide a lasting remedy for this type of pain.

The innovative medipro® RELAX Liner was created within a framework of an intensive research and development programme, achieving a lasting remedy against phantom limb pain without side effects as a result of the unique outer covering called Umbrellan®.

In order to successfully fit the RELAX Liner to the patient, it is important to analyse the pain experienced by the patient in detail.

We recommend that the prescribing doctor be seen when managing phantom limb pain in case of ambiguous symptoms. It is also important to take individual circumstances into consideration. The medipro® RELAX Liner Guide No. 70.638 will be helpful in this process.

### Indications

(see medipro®Liner RELAX Guide (ArtN° 70.638))

- Idiopathic Limb Pain
- Residual Limb Pain
- Phantom Limb Pain
- Phantom Sensations

### Contraindications

(see medipro®Liner RELAX Guide (ArtN° 70.638))

The contraindications listed below are situations in which the medipro®Liner RELAX does not show any signs of effect.

- Vascular Residual Limb Pain
- Inflammable Residual Limb Pain
- Proliferative Residual Limb Pain

## medipro® RELAX Liner 3mm & 6mm (Trans-Tibial Liner)

### Technical Information

- Umbrellan® cover and Matrix providing effective relief from phantom limb pain
- Available in 5 cm and 10 cm Matrix
- Thicker distal wall
- Supplied with cover, therefore no need for donning aid/spray
- medipro® RELAX Liner can be used either with or without the pin adaptor
- Each medipro® RELAX Liner includes: Pin adaptor, thread cap, silicone adhesive and superglue, as well as the medipro® washing and drying stand

## medipro® RELAX Liner TF (Trans-Femoral Liner)

### Technical Information

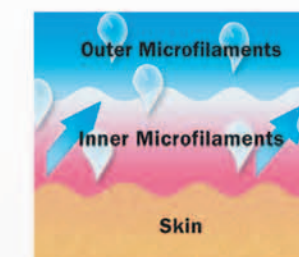
- Total Umbrellan® Matrix providing effective relief from phantom limb pain.
- Flexible umbrella for the best possible conformity to the end of the residual limb and to allow easier donning
- Smooth gliding outer surface eliminates the need for an outer textile, which typically restricts elasticity, as well as eliminating the need for donning sprays
- Minimal longitudinal stretch of the liner makes it comfortable to wear - includes a high degree of transverse stretch similar to a stump shrinker
- The liner tapers distally, however the proximal section still offers the required width
- Orientation marks to make sure the liner is donned easily and in the same position each time
- medipro® RELAX Liners may be used with or without the pin adaptor
- Each medipro® RELAX Liner includes: Pin adaptor, thread cap, silicone adhesive and superglue as well as the medipro® washing and drying stand



## medipro® RELAX Night Care Sock

The medipro® RELAX Night Care stump sock, with its unique and effective Umbrellan® fabric reduces phantom limb pain and increases comfort while not wearing a prosthesis.

- Elasticity to provide comfort at night
- A close fit
- A soft band that offers a comfortable and constant grip – no slipping
- Temperature regulation
- Alleviation and reduction of phantom limb pain



THE RELAX NIGHT CARE SOCK INCORPORATES CLIMA COMFORT® TECHNOLOGY FOR OPTIMAL REGULATION OF SKIN TEMPERATURE. THE PATENTED UMBRELLAN® WEAVE QUICKLY TRANSPORTS MOISTURE FROM THE SURFACE OF THE SKIN TO THE OUTSIDE OF THE TEXTILE, WHILST AT THE SAME TIME, ALLOWING THE OPTIMAL AMOUNT OF OXYGEN TO REACH THE SKIN TO AVOID DRYNESS.

### Indications

- To protect the residual limb
- Analgesia or pain relief by Umbrellan® for:
  - > Phantom Limb Pain
  - > Idiopathic residual Limb Pain
  - > Phontom Sensations

### Contraindications

- Poor manual dexterity of the user and/or no assistance available
- Open wounds
- Recent skin grafts (less than 4 weeks since grafting or before wound healing complete)

**Important Notice: We recommend that you see the doctor treating you in case you are experiencing ambiguous symptoms.**