

Xtend Connect

The Xtend Connect by Lindhe Xtend allows the quick exchange between different prosthetic components. Depending upon the lifestyle and usage needs of the user, the same prosthetic socket can be worn across multiple limbs with the use of this device.

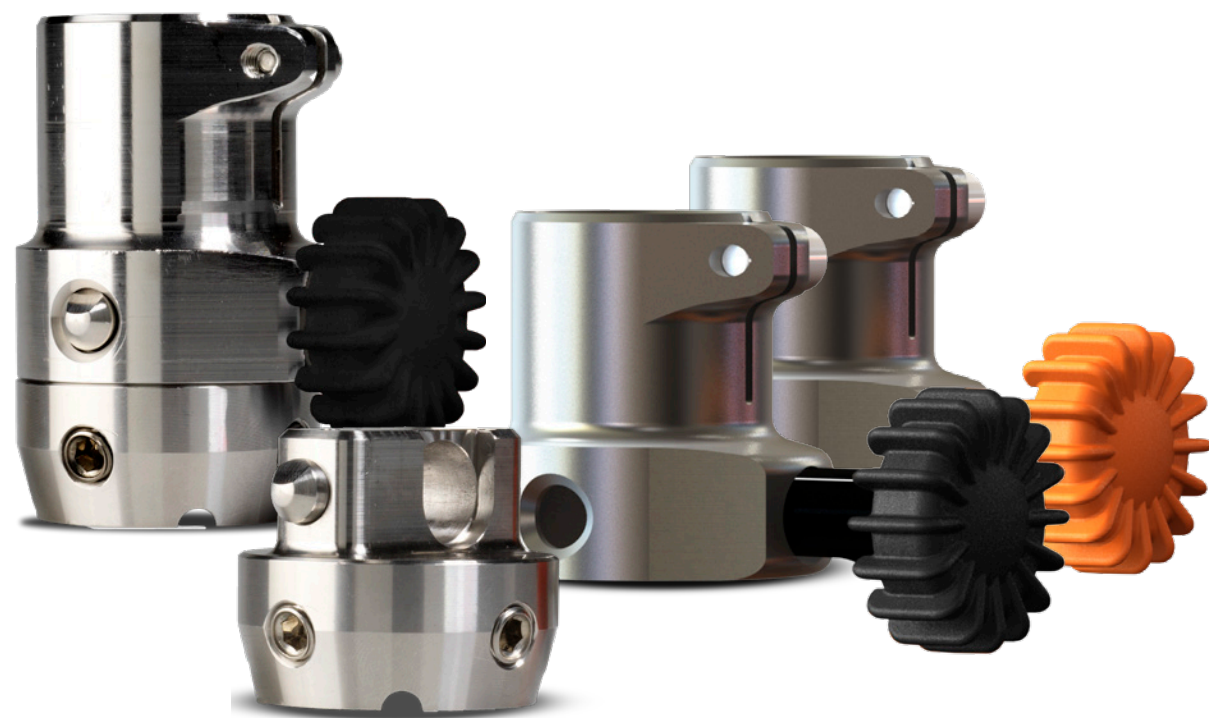
Suitable for both transtibial and transfemoral applications, the system is ideal for quickly disconnecting the prosthetic foot to make dressing easier, or allowing the same limb to be worn with feet set to varied heel heights - without the need to change footwear.

Waterproof*

***Waterproof note:** Following exposure to chlorinated water, rinse immediately with fresh water and dry.

Features and Benefits

- 150kg weight Limit**
- Quickly exchange feet whilst keeping the same socket, and maintaining optimal alignment of prosthesis
- Change sockets whilst keeping limb builds intact
- Designed to be used with industry standard 30mm systems
- Greater flexibility when dressing - such as removing feet to pull on trousers
- Waterproof in fresh water, sea water and chlorinated water with appropriate care*
- Less baggage - users can pack their activity specific prosthesis without having to pack the entire limb build
- Safety button ensures secure connection from the first step
- Orange wheel colour available



Structural and Socket Components

Lindhe Xtend - Xtend Connect

Ordering Information

Please note: These devices do not have a trial period as standard. If you wish to discuss the Xtend Connect please contact your local product manager for advice prior to placing your order.

Impact Level Descriptions

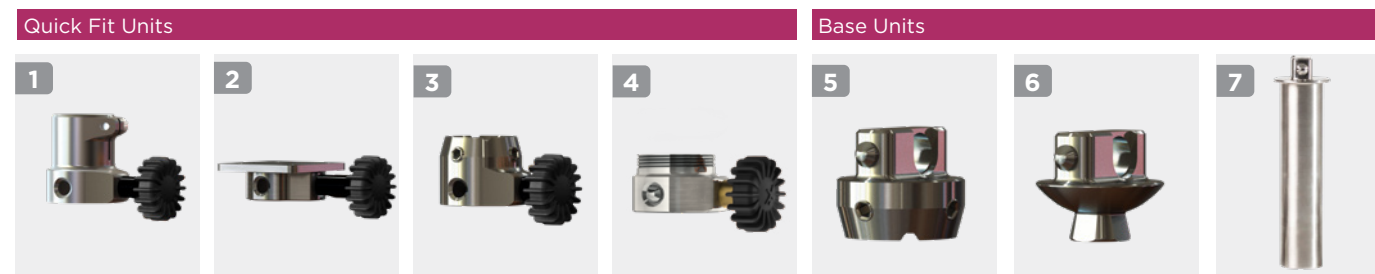
Low: Daily activities include mostly level ground walking, moving around in the home and the community.

Moderate: Daily activities include up to unlimited walking, climbing stairs and occasional moderate lifting (this does not include running).

High: Daily activities include fast walking, jogging, running, lifting heavy objects and/or recreational sports.

Xtend Connect Components			
Part Number	Description	Weight Limit	
1	NA100-Q30-150	Quick Fit Unit, Tube Clamp 30 mm (Black)	150kg
2	NA100-Q4-150	Quick Fit Unit, 4-Hole Adapter (Black)	150kg
3	NA100-QF-150	Quick Fit Unit, Female Pyramid Adapter (Black)	150kg
4	NA100-QP-150	Quick Fit Unit, M36 Threaded Device (Black)	150kg
5	NA100-BF-150	Base Unit with Female Pyramid Receiver	150kg
6	NA100-BM-150	Base Unit with Male Pyramid Adapter	150kg
7	NA100-B30-150	Base Unit with 30 mm Tube	150kg

Note: For Orange wheel colour add '-O' suffix to part numbers in items 1-4



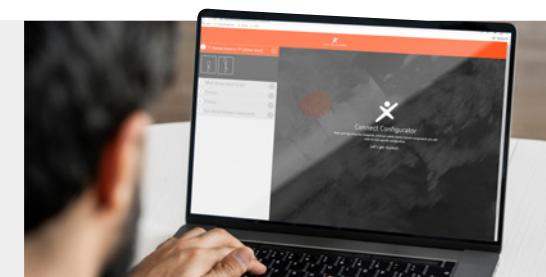
Product Specification

Material	Stainless Steel	Activity Level	K3 - K4**
Weight Limit**	150 kg	Warranty	2 Years

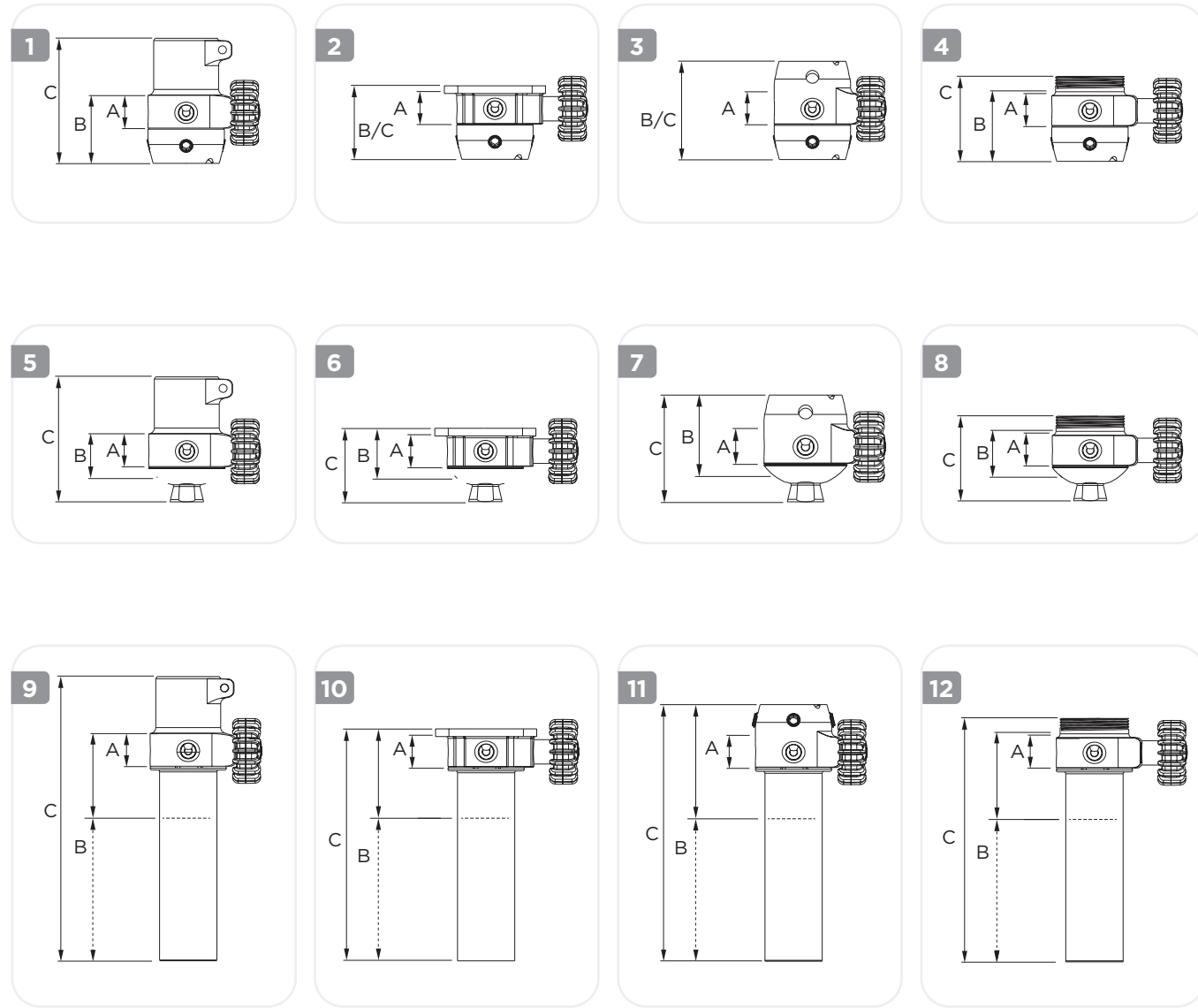
**For activities reaching K4 levels, patient weight is limited at 100kg

INTERACTIVE Lindhe Xtend Connect Configurator

Use the Xtend Connect component selection tool to ensure the most effective combination is selected.



SCAN TO TRY



Xtend Connect Build Dimensions

A) Functional Height (mm) B) Effective Height (mm) C) Total Height (mm) D) Effective Weight (g) E) Total Weight (g)

	Combination	Description	A	B	C	D	E
1	NA100-Q30-150 & NA100-BF-150	Xtend Connect Quick Fit Unit, tube clamp 30mm & Xtend Connect Base Unit, Female Pyramid Adapter	19mm	36mm	66mm	208g	330g
2	NA100-Q4-150 & NA100-BF-150	Xtend Connect Quick Fit Unit, 4-hole adapter & Xtend Connect Base Unit, Female Pyramid Adapter	19mm	39mm	39mm	208g	314g
3	NA100-QF-150 & NA100-BF-150	Xtend Connect Quick Fit Unit, female pyramid adapter & Xtend Connect Base Unit, Female Pyramid Adapter	19mm	52mm	52mm	208g	303g
4	NA100-QP-150 & NA100-BF-150	Xtend Connect Quick Fit Unit, M36 Threaded Device & Xtend Connect Base Unit, Female Pyramid Adapter	19mm	37mm	44mm	208g	299g
5	NA100-Q30-150 & NA100-BM-150	Xtend Connect Quick Fit Unit, tube clamp 30mm & Xtend Connect Base Unit, Male Pyramid Adapter	19mm	23mm	66mm	208g	299g
6	NA100-Q4-150 & NA100-BM-150	Xtend Connect Quick Fit Unit, 4-hole adapter & Xtend Connect Base Unit, Male Pyramid Adapter	19mm	26mm	39mm	208g	314g
7	NA100-QF-150 & NA100-BM-150	Xtend Connect Quick Fit Unit, female pyramid adapter & Xtend Connect Base Unit, Male Pyramid Adapter	19mm	39mm	52mm	208g	279g
8	NA100-QP-150 & NA100-BM-150	Xtend Connect Quick Fit Unit, M36 Threaded Device & Xtend Connect Base Unit, Male Pyramid Adapter	19mm	24mm	44mm	208g	274g
9	NA100-Q30-150 & NA100-B30-150	Xtend Connect Quick Fit Unit, tube clamp 30mm & Base Unit with 30 mm Tube	19mm	49-149mm*	179mm	208g	490g*
10	NA100-Q4-150 & NA100-B30-150	Xtend Connect Quick Fit Unit, 4-hole adapter & Base Unit with 30 mm Tube	19mm	52-152mm*	152mm	208g	519g*
11	NA100-QF-150 & NA100-B30-150	Xtend Connect Quick Fit Unit, female pyramid adapter & Base Unit with 30 mm Tube	19mm	65-165mm*	165mm	208g	514g*
12	NA100-QP-150 & NA100-B30-150	Xtend Connect Quick Fit Unit, M36 Threaded Device & Base Unit with 30 mm Tube	19mm	51-151mm*	165mm	208g	470g*

*B30: Adaptable effective height and weight as tube can be cut off with up to 100mm.

